

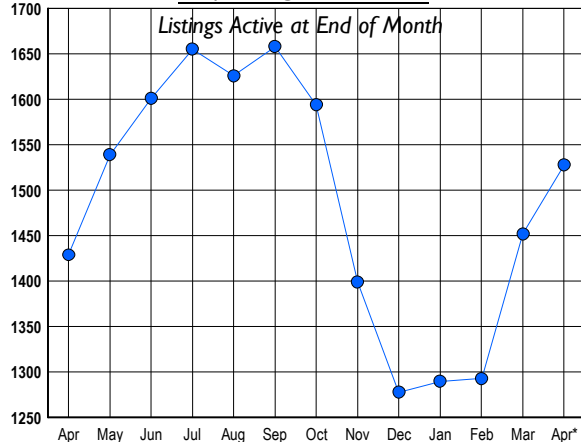
# HOWARD COUNTY Residential Market Report

# HOUSING REPORT Single Family Homes April 2008

## LISTINGS

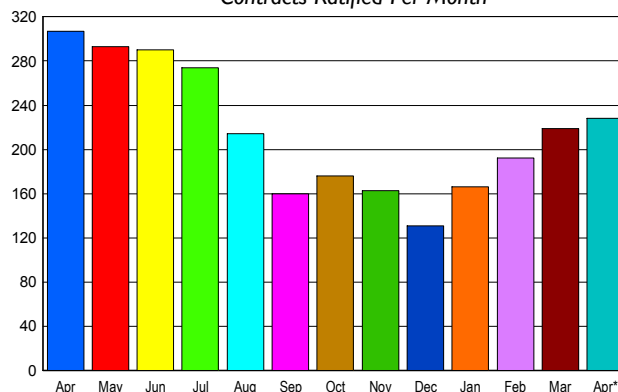
Prices Range	New This Month			Total Actives		
	2008	2007	% Change	2008	2007	% Change
0 - 149,999	2	1	100.0	5	1	400.0
150,000 - 199,999	0	0	0.0	1	0	100.0
200,000 - 299,999	48	39	23.1	139	57	143.9
300,000 - 399,999	137	169	-18.9	359	299	20.1
400,000 - 499,999	76	110	-30.9	262	225	16.4
500,000 - 599,999	63	82	-23.2	174	204	-14.7
600,000 - 699,999	80	72	11.1	194	170	14.1
700,000 - 799,999	44	47	-6.4	124	132	-6.1
800,000 - 899,999	24	27	-11.1	66	86	-23.3
900,000 - 999,999	18	16	12.5	59	48	22.9
1,000,000 - 1,249,999	15	12	25.0	50	54	-7.4
1,250,000 - 1,499,999	15	39	-61.5	46	90	-48.9
1,500,000 +	9	27	-66.7	49	63	-22.2
<b>TOTALS</b>	<b>531</b>	<b>641</b>	<b>-17.2</b>	<b>1528</b>	<b>1429</b>	<b>6.9</b>

## INVENTORY TREND



## SALES TREND

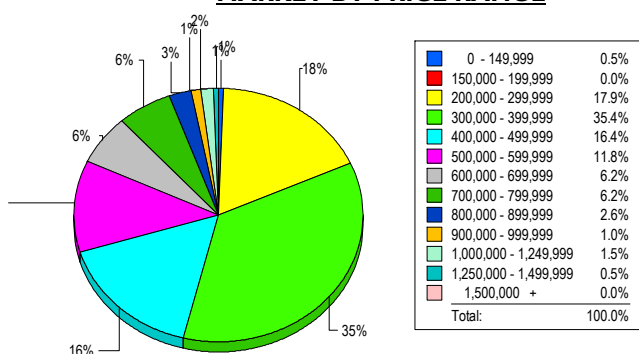
Contracts Ratified Per Month



## CONTRACTS

Price Range	New This Month			Year-To-Date		
	2008	2007	% Change	2008	2007	% Change
0 - 149,999	1	0	100.0	3	1	200.0
150,000 - 199,999	0	1	-100.0	1	7	-85.7
200,000 - 299,999	35	31	12.9	114	105	8.6
300,000 - 399,999	70	85	-17.6	266	325	-18.2
400,000 - 499,999	40	71	-43.7	135	221	-38.9
500,000 - 599,999	32	45	-28.9	95	155	-38.7
600,000 - 699,999	22	33	-33.3	72	112	-35.7
700,000 - 799,999	11	17	-35.3	44	63	-30.2
800,000 - 899,999	6	9	-33.3	25	32	-21.9
900,000 - 999,999	4	5	-20.0	9	15	-40.0
1,000,000 - 1,249,999	4	5	-20.0	13	20	-35.0
1,250,000 - 1,499,999	1	5	-80.0	7	12	-41.7
1,500,000 +	2	0	200.0	4	6	-33.3
<b>TOTALS</b>	<b>228</b>	<b>307</b>	<b>-25.7</b>	<b>788</b>	<b>1074</b>	<b>-26.6</b>

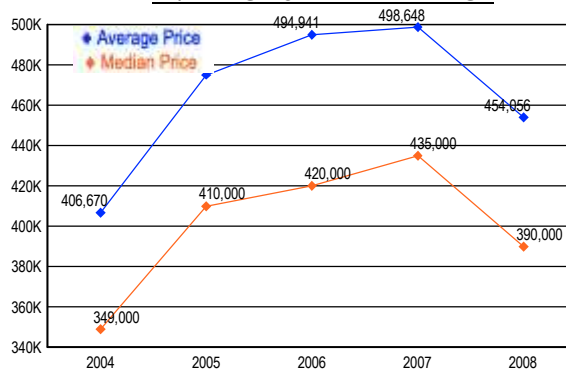
## MARKET BY PRICE RANGE



## SETTLEMENTS

Price Range	New This Month			Year-to-Date		
	2008	2007	% Change	2008	2007	% Change
0 - 149,999	1	1	0.0	1	2	-50.0
150,000 - 199,999	0	0	0.0	2	8	-75.0
200,000 - 299,999	35	26	34.6	96	93	3.2
300,000 - 399,999	69	79	-12.7	213	295	-27.8
400,000 - 499,999	32	58	-44.8	111	157	-29.3
500,000 - 599,999	23	36	-36.1	67	124	-46.0
600,000 - 699,999	12	17	-29.4	38	86	-55.8
700,000 - 799,999	12	14	-14.3	27	46	-41.3
800,000 - 899,999	5	13	-61.5	22	31	-29.0
900,000 - 999,999	2	5	-60.0	8	12	-33.3
1,000,000 - 1,249,999	3	2	50.0	10	15	-33.3
1,250,000 - 1,499,999	1	1	0.0	3	5	-40.0
1,500,000 +	0	0	0.0	0	5	-100.0
<b>TOTALS</b>	<b>195</b>	<b>252</b>	<b>-22.6</b>	<b>598</b>	<b>879</b>	<b>-32.0</b>

## AVERAGE & MEDIAN PRICE



DATA SOURCE: Metropolitan Regional Information Systems, Inc. (MRIS)

NOTES: Properties not listed through this Multiple Listing Service are not reflected. The term "sales" represents ratified purchase contracts. Current year information is preliminary and subject to revision. Current year-to-date contract information may not equal the sum of the monthly contract totals reported in