

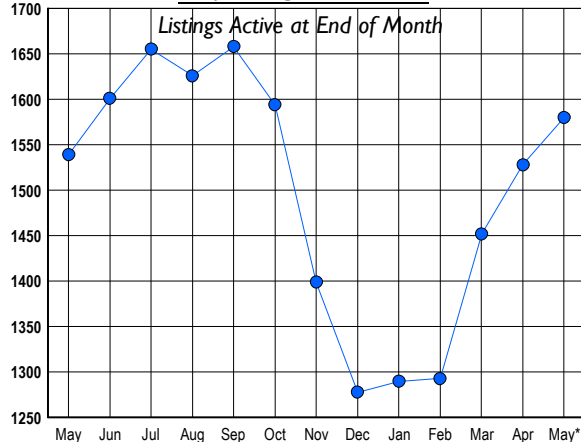
HOWARD COUNTY Residential Market Report

HOUSING REPORT Single Family Homes May 2008

LISTINGS

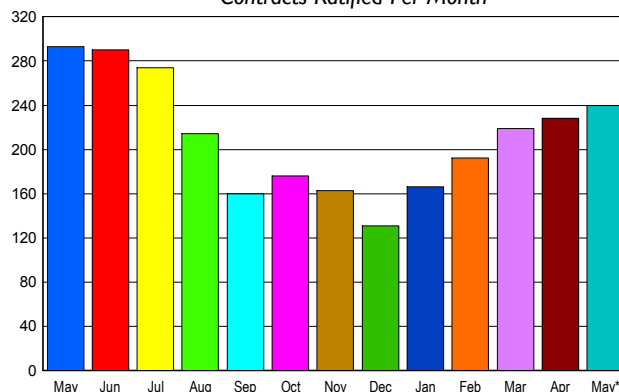
Prices Range	New This Month			Total Actives		
	2008	2007	% Change	2008	2007	% Change
0 - 149,999	0	0	0.0	3	1	200.0
150,000 - 199,999	5	0	500.0	4	0	400.0
200,000 - 299,999	68	30	126.7	174	66	163.6
300,000 - 399,999	123	175	-29.7	361	340	6.2
400,000 - 499,999	71	111	-36.0	254	270	-5.9
500,000 - 599,999	78	91	-14.3	200	202	-1.0
600,000 - 699,999	73	79	-7.6	188	180	4.4
700,000 - 799,999	29	53	-45.3	103	141	-27.0
800,000 - 899,999	29	25	16.0	79	86	-8.1
900,000 - 999,999	23	15	53.3	63	46	37.0
1,000,000 - 1,249,999	17	22	-22.7	56	53	5.7
1,250,000 - 1,499,999	16	11	45.5	44	92	-52.2
1,500,000 +	15	10	50.0	51	62	-17.7
TOTALS	547	622	-12.1	1580	1539	2.7

INVENTORY TREND



SALES TREND

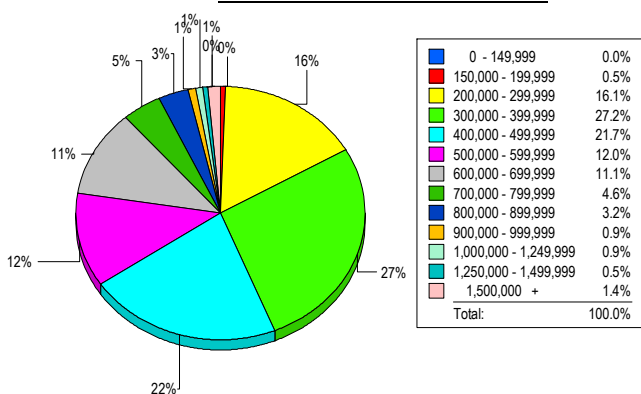
Contracts Ratified Per Month



CONTRACTS

Price Range	New This Month			Year-To-Date		
	2008	2007	% Change	2008	2007	% Change
0 - 149,999	1	0	100.0	4	1	300.0
150,000 - 199,999	2	0	200.0	3	7	-57.1
200,000 - 299,999	30	23	30.4	141	130	8.5
300,000 - 399,999	63	93	-32.3	330	410	-19.5
400,000 - 499,999	44	46	-4.3	179	269	-33.5
500,000 - 599,999	30	41	-26.8	126	192	-34.4
600,000 - 699,999	35	34	2.9	105	146	-28.1
700,000 - 799,999	16	22	-27.3	62	82	-24.4
800,000 - 899,999	7	13	-46.2	33	45	-26.7
900,000 - 999,999	5	7	-28.6	14	22	-36.4
1,000,000 - 1,249,999	3	8	-62.5	15	28	-46.4
1,250,000 - 1,499,999	0	4	-100.0	7	16	-56.3
1,500,000 +	4	2	100.0	9	8	12.5
TOTALS	240	293	-18.1	1028	1356	-24.2

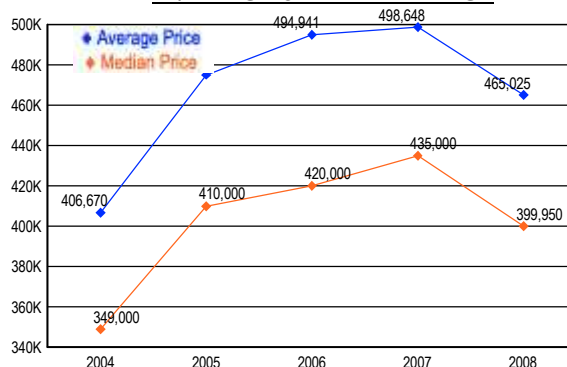
MARKET BY PRICE RANGE



SETTLEMENTS

Price Range	New This Month			Year-to-Date		
	2008	2007	% Change	2008	2007	% Change
0 - 149,999	0	0	0.0	1	2	-50.0
150,000 - 199,999	1	2	-50.0	3	10	-70.0
200,000 - 299,999	35	22	59.1	136	117	16.2
300,000 - 399,999	59	65	-9.2	276	365	-24.4
400,000 - 499,999	47	57	-17.5	160	222	-27.9
500,000 - 599,999	26	35	-25.7	94	160	-41.3
600,000 - 699,999	24	27	-11.1	63	115	-45.2
700,000 - 799,999	10	14	-28.6	38	60	-36.7
800,000 - 899,999	7	5	40.0	29	36	-19.4
900,000 - 999,999	2	1	100.0	11	13	-15.4
1,000,000 - 1,249,999	2	7	-71.4	12	22	-45.5
1,250,000 - 1,499,999	1	3	-66.7	4	8	-50.0
1,500,000 +	3	2	50.0	5	8	-37.5
TOTALS	217	240	-9.6	832	1138	-26.9

AVERAGE & MEDIAN PRICE



DATA SOURCE: Metropolitan Regional Information Systems, Inc. (MRIS)

NOTES: Properties not listed through this Multiple Listing Service are not reflected. The term "sales" represents ratified purchase contracts. Current year information is preliminary and subject to revision. Current year-to-date contract information may not equal the sum of the monthly contract totals reported in